

XEON 3 can integrate a **GOBO** projector capable of projecting monochrome or multicolored black and white images or messages up to 12 m. In order to provide maximum resolution, the optics of GOBOs projectors are made of dichroic glass, allowing superior flexibility of colours and light effects, including metallic or pastel colours (metallic GOBOs available).

In addition, the 5500K LED source with IRC 80 provides crisp, clear projection with perfect colour rendering, regardless of the surrounding environment.

XEON 3 - GOBO

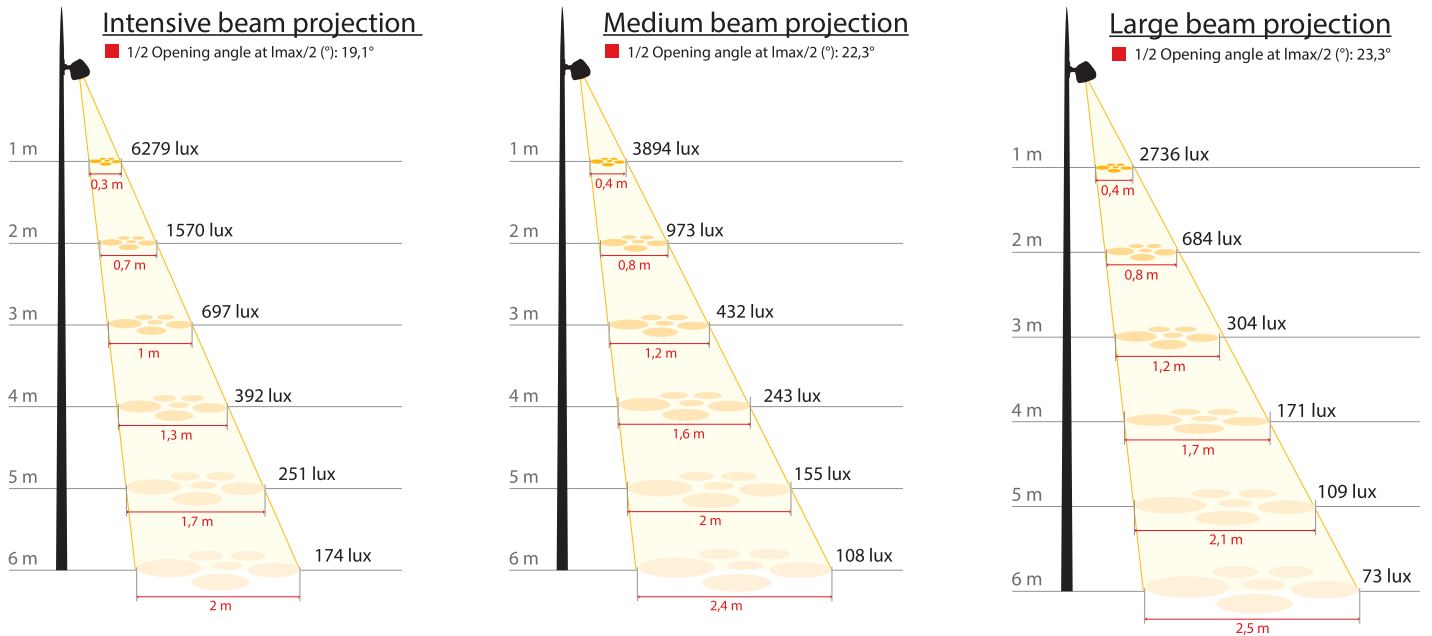


DESCRIPTION

- Injection cast aluminium body, module and mechanical interfaces
- Heat-tempered and screen-printed glass bowl
- Finish in polyester powder coating, in a choice of colours
- Power 34 W
- IP 66
- IK 10
- 6.8 kg – SCx 0.06 m²
- Class I only
- Pre-wired in the factory
- Dimensions and mechanical interfaces: refer to chapter LIGHTING

CHOICE OF LENS

Three lenses allow a great diversity between the size of the projected graphics and the projection distance. In general, for the same projection distance, the larger the angle of opening, the larger the projected area, and the less bright the projected image.



The illumination data are only indicative and not contractual.

INSTALLING/ CHANGING THE GOBO

- Open the XEON via the three captive screws on the front panel to access the internal projector
- Easy installation of the GOBO in the projector following instructions
- Adjust the focus by turning the lens (by first unscrewing the locking screw, and tightening it after adjustment)

A large library of figurative GOBO patterns such as foliage or clouds, as well as abstract patterns, are available on request. ECLATEC can also create **personalized patterns** on any theme, or using a photo, as requested by the customer.

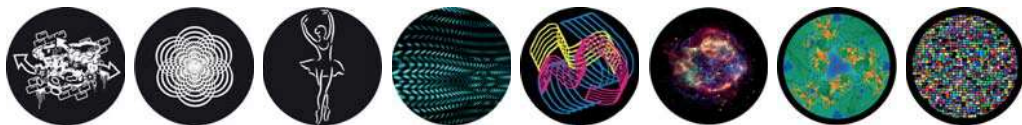
- **In steel:** Disk cut to pattern, logo, with text required. This is the least expensive solution for colourless projection.

Examples of existing patterns:



- **In glass:** The colored GOBOs are formed by superimposing layers of dichroic glass with engraved shapes, to mix the colours necessary for the image by subtraction. These custom glass GOBOs are ultra-thin (1.1mm thick for monochrome and black and white models, and 1.9mm for multicolored models), providing excellent image projection.

Examples of existing patterns:

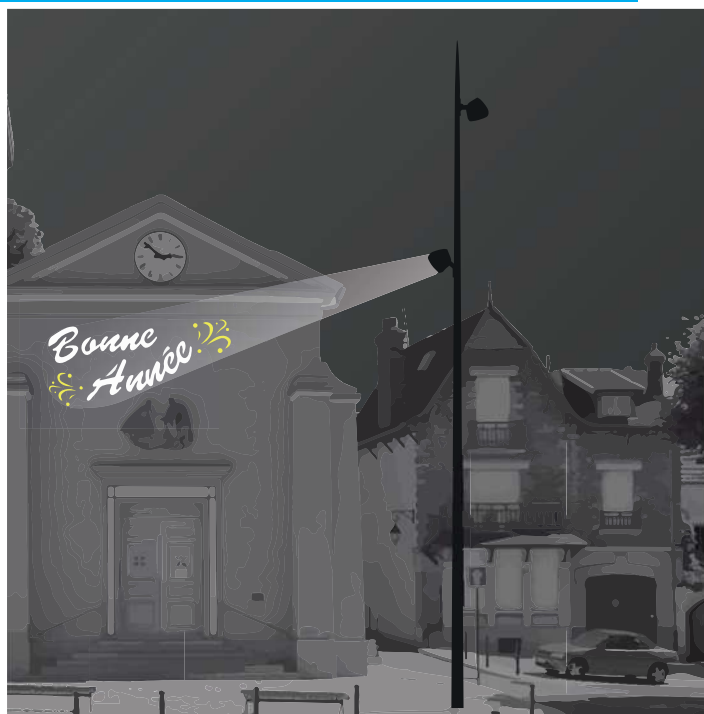


The pattern to be projected must be provided in a vector format, in order to be transcribed on the GOBO. ECLATEC can convert your computer files into this format.

EXAMPLES OF USES



Projection of patterns on the ground



Projection of messages on buildings



Architectural enhancement